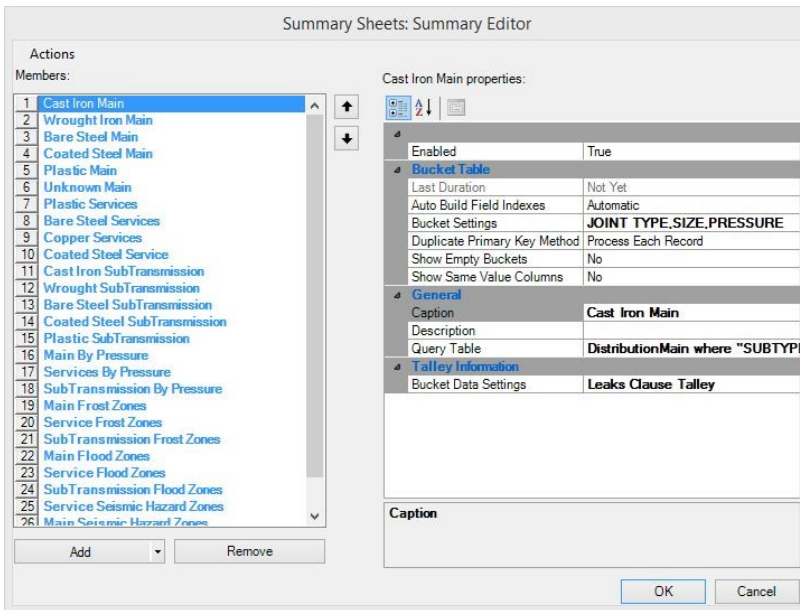


DIMP Summary Extension



- Provides information to fulfill the **Know Your System** requirement of your Distribution Integrity Management Program (**DIMP**).
- Summarizes facilities according to **Flood, Seismic and Frost Zones or any other polygon** in the GIS.
- Summarizes leaks by material, pressure, diameter range, CP protection, connection types or **any other set of attributes available in the GIS**
- Each leak summary item ("bucket") is summarized by **total leaks, leaks per mile, and leak cause**.
- Can export the report in HTML, Microsoft **Excel**, and Microsoft **Access**.
- Supports **ArcGIS 10.2 - 10.5.1**

Wrought Iron Main												
NOMINAL DIAMETER	Count	Miles	NATURAL FORCES	NO LEAK	MATERIAL DEFECT	OTHER	EXCAVATION DAMAGE	CORROSION	Total Leaks	Leaks per Miles	Leaks / Count	
< 4	76	3.79				17	1	5	33	12.86		
4 - 4	375	13.24	2	3	4	218	2	98	327	24.7		
6 - 8	174	6.41		4	7	78	5	29	123	19.2		

Bare Steel Main												
CONNECT TYPE	INSERVICEDATE	NOMINAL DIAMETER	OPERATING PRESSURE	Count	Miles	NATURAL FORCES	NO LEAK	MATERIAL DEFECT	OTHER	EXCAVATION DAMAGE	EQ	F
Welded	pre 1950	<= 6	>= 10			3245	103.92	1	5	3	496	4
Unknown	pre 1950	<= 6	>= 10			635	17.97		13	5	171	6

Coated Steel Main													
CATHODIC PROTECTION	CONNECT TYPE	INSERVICEDATE	NOMINAL DIAMETER	OPERATING PRESSURE	Count	Miles	NATURAL FORCES	NO LEAK	MATERIAL DEFECT	OTHER	EXCAVATION DAMAGE	CORR	
NO CP	Welded	pre 1970	<= 6	>= 10			23170	867.01	116	89	50	2811	43
NO CP	Unknown	pre 1970	<= 6	>= 10			1359	38.75	11	10	3	203	4

Plastic Main												
PLASTIC TYPE	INSERVICEDATE	SIZE	OPERATING PRESSURE	Count	Miles	NATURAL FORCES	NO LEAK	MATERIAL DEFECT	OTHER	EXCAVATION DAMAGE	EXCAVATION DAMAGE	CORR
HD	pre 1980	<= 4	>= 10			1	01					
SD	pre 1980	<= 4	>= 10			1	04					
OTHER	pre 1980	<= 4	>= 10			10166	409.59	3	22	11	238	1
											44	20

Plastic Services					
PLASTIC TYPE	INSERVICEDATE	SIZE	PRESSURE	Count / 100	Miles
CAB	pre 1970	<= 4	>= 10	160	167.86